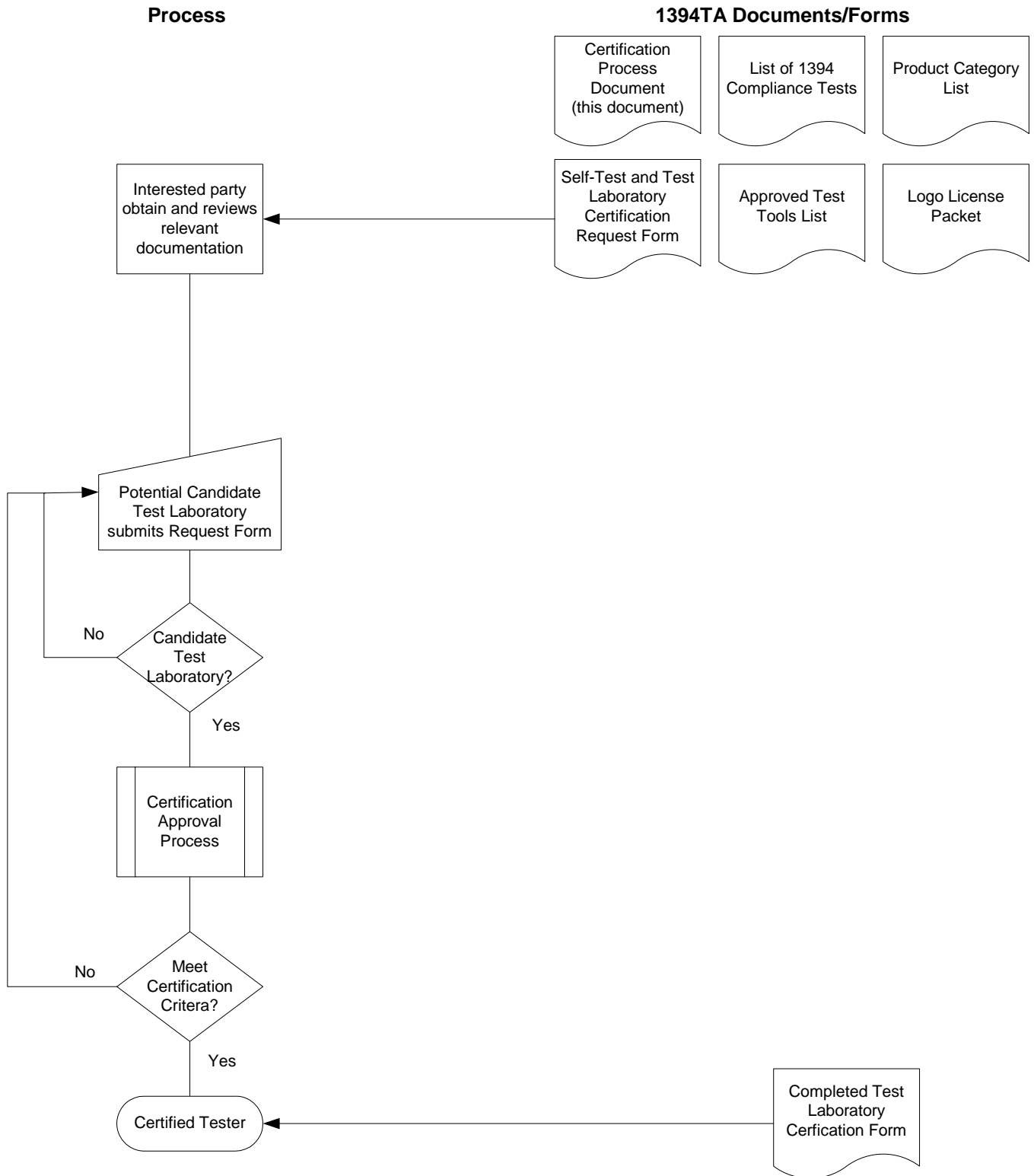


# Test Laboratory Certification Process



## Test Laboratory Certification Process

### INTRODUCTION

The “1394TA Logo Compliance Program” test laboratory **certification** process for both “Self-Test” and for “Third-Party” test laboratories is fundamentally identical. The basic difference is that self-test laboratories are only certified to test their own manufactured products, whereas third-party test laboratories are certified to test products from any manufacturer. Also the 1394TA may impose special selection criteria for third-party test laboratories.

### TEST LABORATORY CERTIFICATION FLOW CHART

Manufacturers and test laboratories to be certified to test product for the “1394TA Logo Compliance Program” use the test laboratory certification process, see flow chart on page 1. This process applies to both potential Self-Test and Third-Party Test Laboratories.

### DOCUMENTS RELATED TO THE FLOW CHART

#### Step 1. Potential Candidate’s Request to the 1394TA for Certification.

A potential Self-Test or Third-Party Test Laboratory, wishing to become certified to test products for the “1394TA Logo Compliance Program” reviews the following information which may be found on the 1394TA website:

- TLCP v1:** (This document) **Test Laboratory Certification Process**
- TSL v1:** **Test Specification List**
- CTLR v2:** **Self-Test and Third-Party Test Laboratory Certification Request Form**
- PCL v1:** **Product Category List**
- TTL v0.3:** **Test Tools List**
- LP:** **1394TA Logo Compliance License Packet (Informational only)**
- TLC v0.1:** **Test Laboratory Certification Form**

#### Step 2. The Potential Candidate’s study and Completion of the Documents.

The potential candidate wishing to become a 1394TA CTL (Certified Test Laboratory), studies all the 1394TA documents, and then completes and returns the Self-Test and Third-Party Test Laboratory Certification Request Form to the 1394TA.

#### Step 3. The 1394TA Reviews the Candidate’s Completed Documents.

If the prospective candidate has not met all the required criteria in the opinion of the 1394TA, the candidate is advised what additional steps are required to become registered as a CTLC (Candidate for Test Laboratory Certification). If the prospective candidate has met all requirements, the candidate is advised that the registration process was successfully completed and they are CTLC (Candidate for Test Laboratory Certification).

#### Step 4. 1394TA Self-Test and Third Party Test Laboratory Certification.

It is the responsibility of the CTLC to demonstrate its ability to carry out the testing activities to meet the requirements of the 1394 Trade Association (1394TA).

The 1394TA has three options whereby a CTLC can become a 1394TA CTL (Certified Test Laboratory):

- 1) Seminar Options
- 2) C&I Workshop Options<sup>1</sup>
- 3) CCWG Process

#### Seminar Option

- 1) Register as a Candidate for Test Laboratory (CTLC) and attend a 1394TA endorsed CTLC training program and receive certification. Please consult the 1394TA for dates and times of the training.

#### C&I Workshop Option

The CTLC shall complete on the following:

- 1) Register as a Candidate for Test Laboratory Certification (CTLC) and attend a minimum of two (2) 1394TA Compliance and Interoperability Workshops (C&I Workshops) to learn the test procedures.

---

<sup>1</sup> Certification of Test Laboratories through C&I Workshops is not possible for all product types. Please consult the 1394TA for details.

- 2) After attending two (2) C&I Workshops the CTLC must staff its own test suite(s), and then agree with the 1394TA which products will be tested using those test suite(s). An official 1394TA CTL (Certified Test Laboratory), selected by the 1394TA, will in parallel conduct the same tests, as made by the CTLC to verify the results. After, if the results between the CTLC and the appointed 1394TA CTL correlate, and if the CTLC didn't require significant consulting by the 1394TA CTL test suite operators to obtain the correct results, then the CTLC will be formally certified as a 1394TA CTL.

### **CCWG Process**

The CTLC shall complete the following:

- 1) Register as a Candidate for Test Laboratory Certification (CTLC)
- 2) Obtain the "golden" 1394 Cable and Connector test samples from the 1394TA Compliance Logo Program Administrator.
- 3) Complete the test procedure specified by TS2004003 on the "golden" 1394a cable and connector test samples using CTLC resources and supply a test report to the 1394TA Compliance Logo Program Administrator.
- 3) If the results between the CTLC and the "golden" results from the Round Robin testing completed in 2006 and held by the 1394TA correlate, and if the CTLC didn't require significant consulting by the 1394TA CTL test suite operators to obtain the correct results, then the CTLC will be formally certified as a 1394TA CTL.

### **Step 5. Official 1394TA Certification of a Test Laboratory**

As soon as the 1394TA agrees that the CTLC has successfully completed all requirements for certification as a CTL, the 1394TA will complete and send to the CTLC :

TLC V0.1: A 1394TA completed "Test Laboratory Certification" form

The completed form shall be kept by the new CTL as a confirmation (certificate) that they've completed all necessary steps to become a CTL for the specified product categories.

### **Step 6. Privileges of 1394TA Certified Test Laboratories**

Completion of the Test Laboratory Certification Process, entitles a 1394TA CTL to test and submit "1394TA Logo Compliance Test Results" to the 1394TA for "1394TA Logo Compliance Certification".

### **1394TA Right to Audit:**

The 1394TA has the right to request follow up testing to be performed by a CTL. This request may occur at any time and the CTL is required to comply within a commercially reasonable time. One example, which might lead to such concerns, is when interoperability conflicts occur between two registered 1394TA Compliance Logo Products. If the dispute cannot be resolved between the 1394TA and the CTL, then the 1394TA may withdraw the Certification of the Test Laboratory.